



14 Kilwardby Street
Ashby-de-la-Zouch
LE65 2FQ

£450,000

COME & JOIN US next Saturday & Sunday, 1st & 2nd May 10am-2pm and BOOK YOUR ESCORTED TOUR for our opening weekend of the release of KNIGHTS MEWS, by Lychgate Homes, with 2 FURNISHED SHOWHOMES, town centre living at its finest with 3 HOUSES & 5 remaining 2 bedroom LUXURY APARTMENTS..CALL NOW TO BOOK



Property Features

- Lychgate Homes
- Town Centre
- Versatile Interior
- 1715 Sq Ft
- Allocated Parking
- 3 Double Beds
- All En-Suite
- Living Kitchen
- Roof Garden
- Incl Carpets

Full Description

We are delighted to announce the release of the exciting Knights Mews development by Lychgate Homes, working in tandem with David Granger Architectural Design Ltd of Ashby, and the careful conversion and renovation of one of Ashby's landmark building's, the former Grade 2 listed Fallen Knight Hotel and Restaurant.

Conveniently positioned in the heart of Ashby town centre, the essential character of this distinguished Grade 2 listed building has been preserved and enhanced, while the generous scale and proportions of the interiors offer a selection of 11 bespoke homes, rich in both living space and natural light

14 Kilwardby Street dressed as a showhome, is a spacious 1715sq. ft, high specification 3-bedroom, 3 bathroom town house of elegant proportions, offering versatile living space

to suit all ages.

As with all Lychgate properties, it is impeccably and thoughtfully designed to an exceptionally high standard, offering the best in modern day living, with an abundance of space throughout.

The property offers flexibility with living arrangements and includes a stunning open plan bespoke fitted kitchen with granite worktops by Charnwood Kitchens. There are integrated appliances, including hob with extractor, cooker, fridge-freezer and dishwasher, luxury fitted bathrooms and timber panelled doors. Complete with an efficient gas fired central heating system and generous electrical installations. Externally, a delightful low maintenance private town garden and patio area, wonderful roof garden and sun terrace and allocated parking.

You really could not get closer to the hustle and bustle of the town centre, with everything literally on your doorstep! The array of shops, boutiques, coffee houses, restaurants and pubs ensure there is always something to do, with the library, Hood Park leisure centre and Ashby Castle providing interesting leisure pursuits.

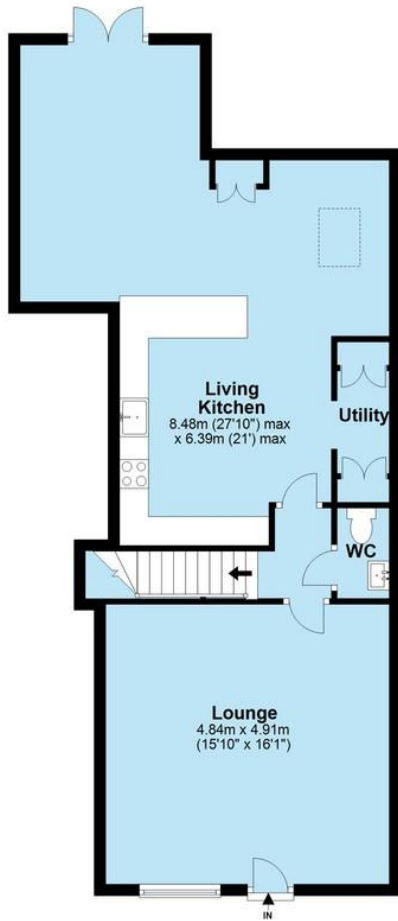
Ashby lies within the National Forest, with Hick's Lodge and Conkers visitor centre close by, combined with a most strategic position lying on the M42 linking up perfectly with the M1 providing quick and easy access to Birmingham, Tamworth, Loughborough, Burton, Leicester, Nottingham and Derby

TENURE The property is Freehold with an annual Service Charge of £320pa for common areas





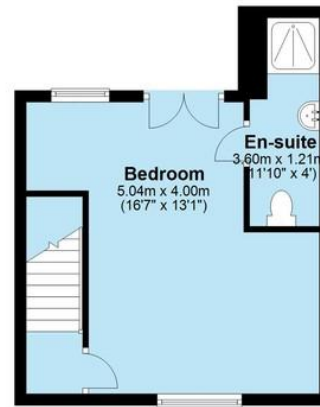
Ground Floor



First Floor



Second Floor



Total area: approx. 159.4 sq. metres (1715.3 sq. feet)



8 The Pass Courtyard
43 Market Street
Ashby-De-La-Zouch
Leicestershire
LE65 1AG

www.whiteheadsestates.co.uk
info@whiteheadsestates.co.uk
01530 353170

Agents Note: Whilst every care has been taken to prepare these sales particulars, they are for guidance purposes only. All measurements are approximate and for general guidance purposes only and whilst every care has been taken to ensure their accuracy, they should not be relied upon and potential buyers are advised to recheck the measurements